

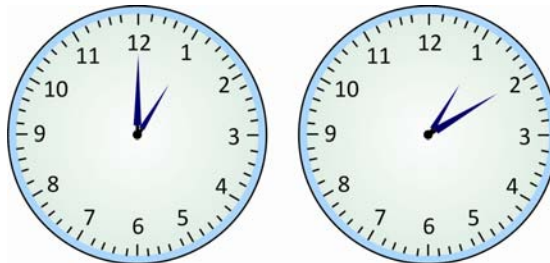
Name: _____ Date: ____/____/____ Score _____

WORKSHEET-2

- (1) What time do you see in the clock?



- A. 8 o'clock B. 9 o'clock C. 12 o'clock D. 11 o'clock
- (2) When Nisha started her homework, the hour hand of her wall clock was on 2 and the minute hand was on 6. What time did she start her homework?
- A. 2:00 B. 2:15 C. 2:06 D. 2:30
- (3) How much time has passed between the two clocks?



- A. 15 minutes B. 2 minutes C. 20 minutes D. 10 minutes
- (4) Shrey's violin lesson started at 9 a.m. The lesson lasted for 1 hour. The lesson ended at _____.
- A. 8:00 am B. 10:00 am C. 8:00 pm D. 10:00 pm
- (5) Tanu began bowling at 4:33 p.m. She finished the game at 5:45 p.m. How long did she bowl?
- A. one hour and 11 minutes B. one hour and 12 minutes
C. one hour and 15 minutes D. one hour and 14 minutes

(6) What time does the clock show?



- A. 1:02 B. 1:05 C. 1:10 D. 1:04

(7) Jaydeep will be going to Disneyland in 2 weeks. Today is March 13. On what date he will go?

March						
Sun	Mon	Tue	Wed	Thu	Fri	Sat
		1	2	3	4	5
6	7	8	9	10	11	12
13	14	15	16	17	18	19
20	21	22	23	24	25	26
27	28	29	30	31		

- A. March 26 B. March 20 C. March 28 D. March 27

(8) What time does the clock show?



- A. 6:00 B. 9:30 C. 9:06 D. 9:35

(9) Ishan began eating breakfast at 7:15 a.m. He finished at 7:40 a.m. How long did it take him to eat?

- A. 20 minutes B. 15 minutes C. 35 minutes D. 25 minutes

(10) How many Mondays are there in January?

January						
Sun	Mon	Tue	Wed	Thu	Fri	Sat
						1
2	3	4	5	6	7	8
9	10	11	12	13	14	15
16	17	18	19	20	21	22
23	24	25	26	27	28	28
30	31					

- A. 5 B. 4 C. 6 D. 7

(11) What time does the clock show?



- A. 7 o'clock B. 5 o'clock C. 8 o'clock D. 9 o'clock

(12) 135 hours =

- A. 5 days B. 5 days 10 hours
 C. 5 days 15 hours D. None of these

(13) What time does the clock show?



- A. 4:30 B. 6 o'clock C. 5:15 D. 5:30

(14) How many months in a year have 30 days?

- A. 6 B. 5 C. 4 D. None of these

(15) What is the date one week after July 7?

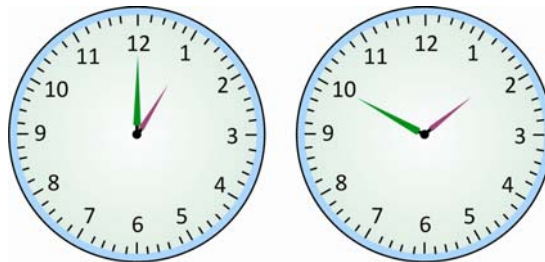
July						
Sun	Mon	Tue	Wed	Thu	Fri	Sat
					1	2
3	4	5	6	7	8	9
10	11	12	13	14	15	16
17	18	19	20	21	22	23
24	25	26	27	28	29	30
31						

- A. July 13 B. July 14 C. July 15 D. July 21

(16) The month with neither 31 days nor 30 days is:

- A. February B. April C. November D. December

(17) How much time has passed between start time and end time?



- A. 50 minutes B. 20 minutes C. 42 minutes D. 55 minutes

(18) What is the date fourteen days before July 23?

July						
Sun	Mon	Tue	Wed	Thu	Fri	Sat
					1	2
3	4	5	6	7	8	9
10	11	12	13	14	15	16
17	18	19	20	21	22	23
24	25	26	27	28	29	30
31						

- A. July 12 B. July 16 C. July 8 D. July 9

(19) What time does the clock show?



- A. 11:10 B. 11:07 C. 11:30 D. 11:20

Ans: (b)

(20) What is the date one week and 3 days after September 10?

September						
Sun	Mon	Tue	Wed	Thu	Fri	Sat
			1	2	3	4
5	6	7	8	9	10	11
12	13	14	15	16	17	18
19	20	21	22	23	24	25
26	27	28	29	30		

- A. September 17 B. September 21
C. September 20 D. September 19

Answer Key-WORKSHEET-2

(1) C
(2) D
(3) D
(4) B
(5) B
(6) C
(7) D

(8) B
(9) D
(10) A
(11) C
(12) C
(13) D
(14) C

(15) B
(16) A
(17) A
(18) D
(19) B
(20) C