

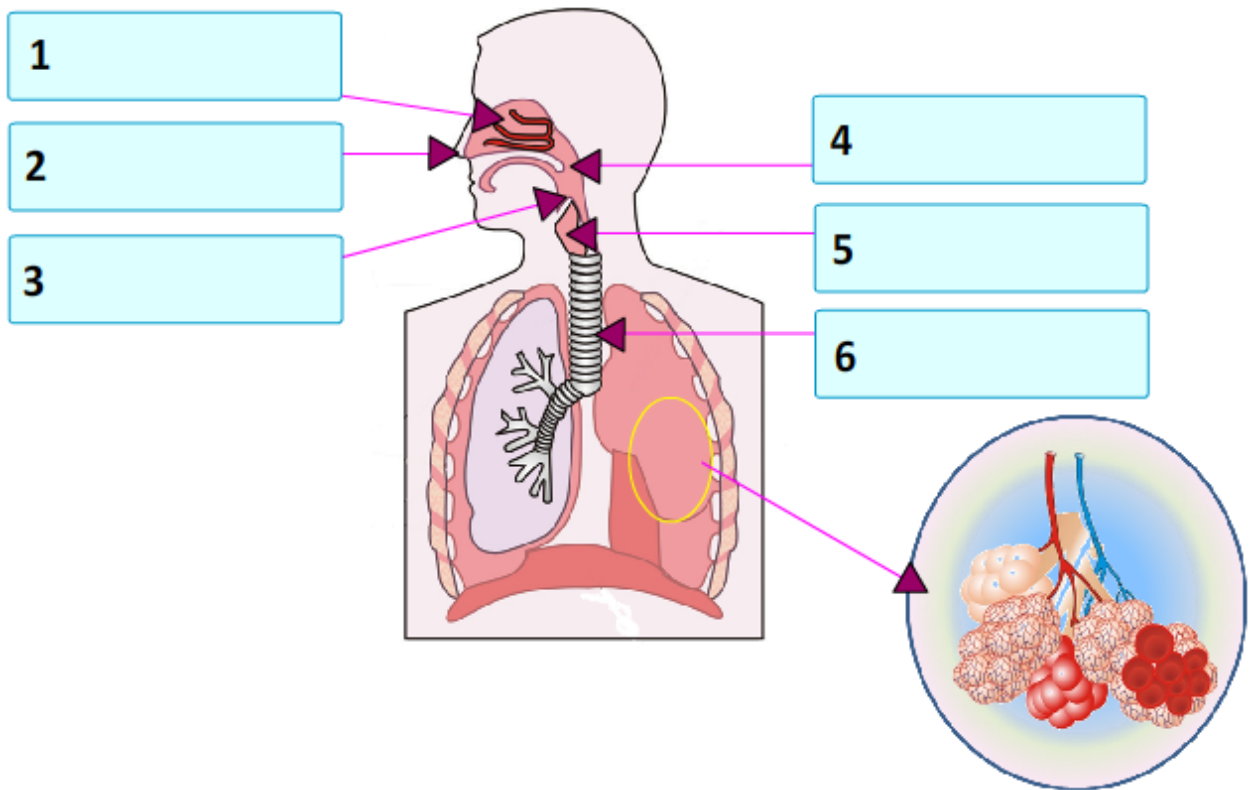
# BODY SYSTEMS



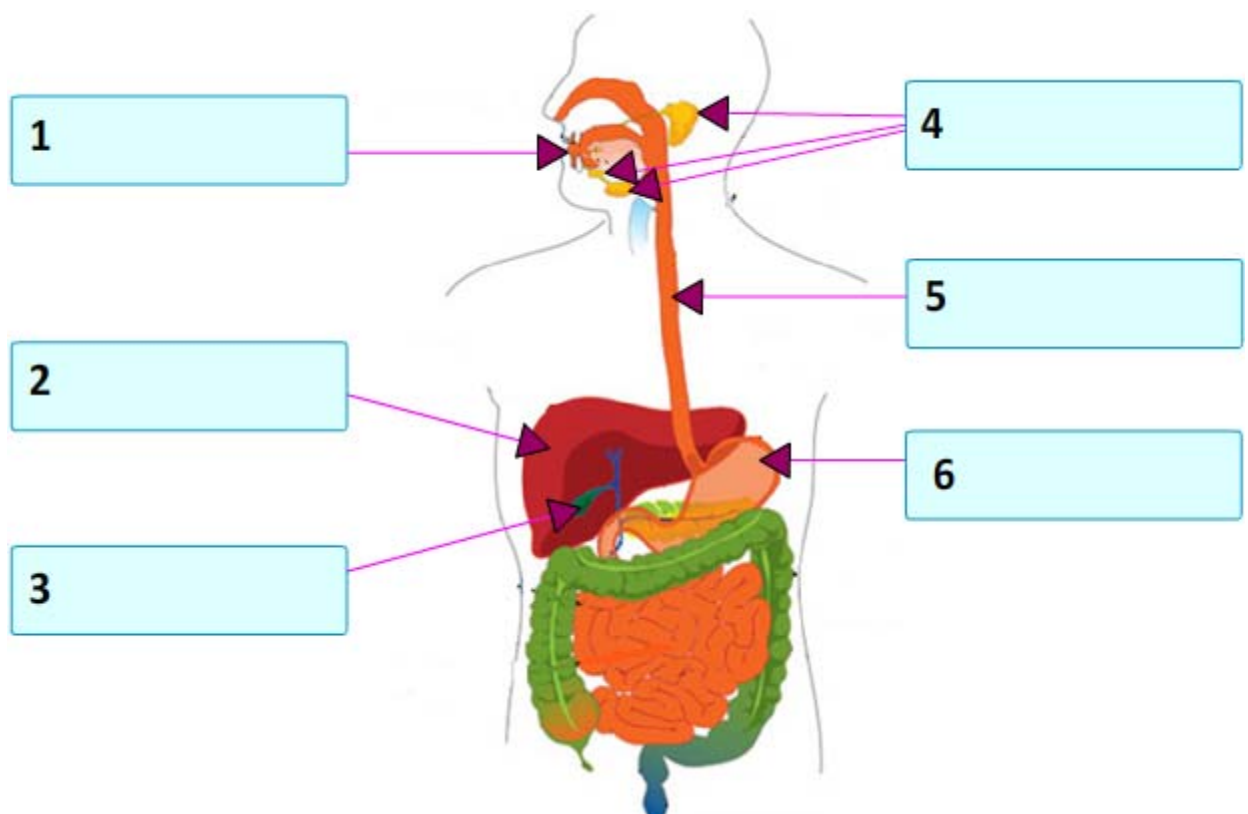
Name: \_\_\_\_\_ Date: \_\_\_/\_\_\_/\_\_\_ Score \_\_\_\_\_

## WORKSHEET – 1

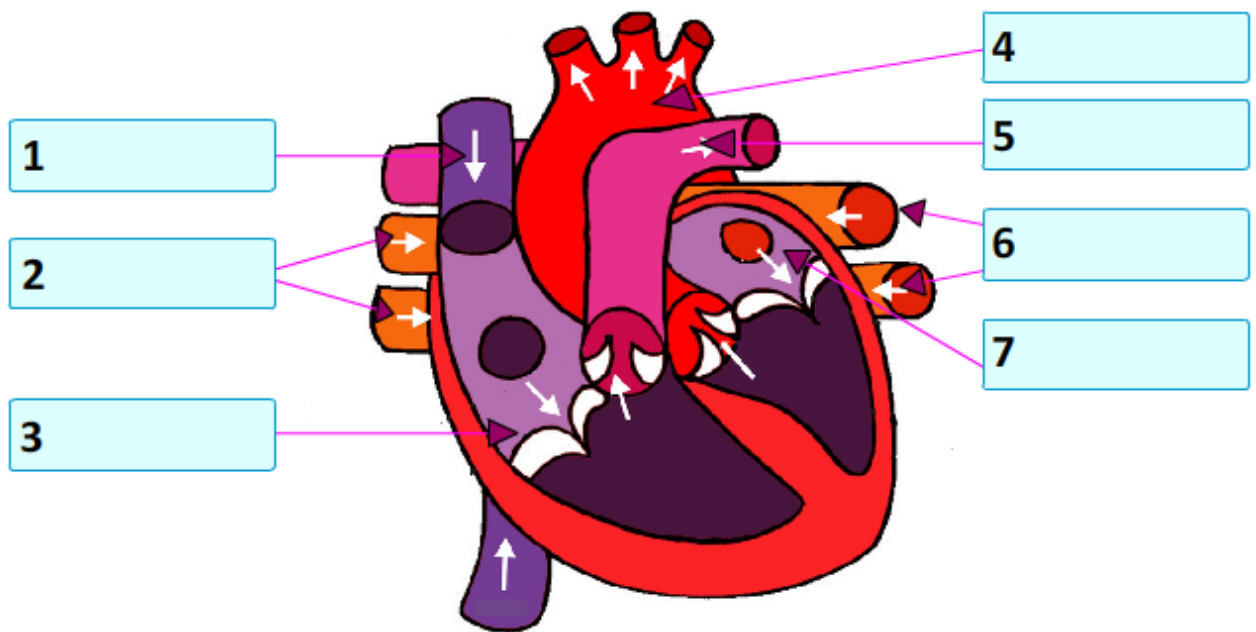
A. Identify the different parts of a respiratory system.  
[Nose, Pharynx, Epiglottis, Larynx, Trachea, Nasal Cavity]



**B. Identify the different parts of a digestive system.**  
**[Aorta, Left Pulmonary Veins, Right Atrium, Superior Vena Cava, Pulmonary Artery, Right Pulmonary Veins, Left Atrium]**

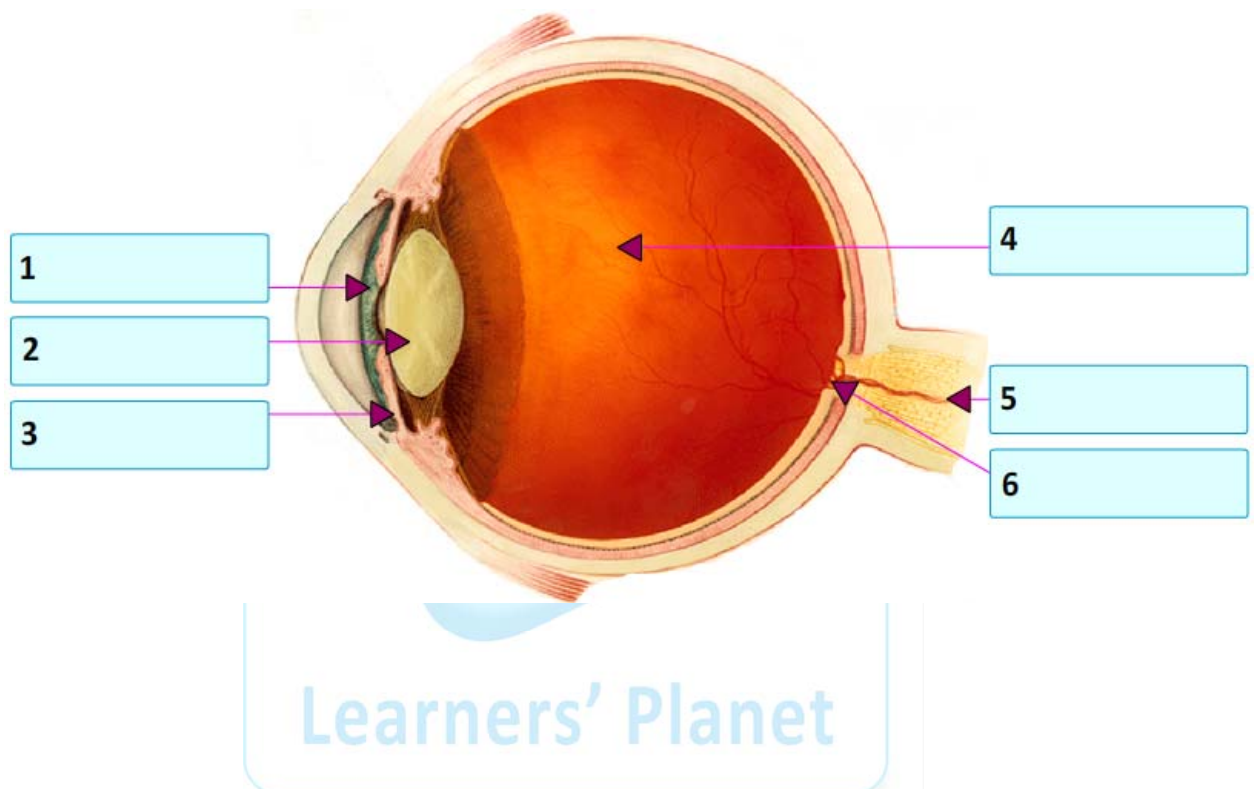


**C. Identify the different parts of a circulatory system.**  
**[Aorta, Left Pulmonary, Right Atrium, Superior Vena Cava, Pulmonary Artery, Right Pulmonary Veins, Left Atrium]**

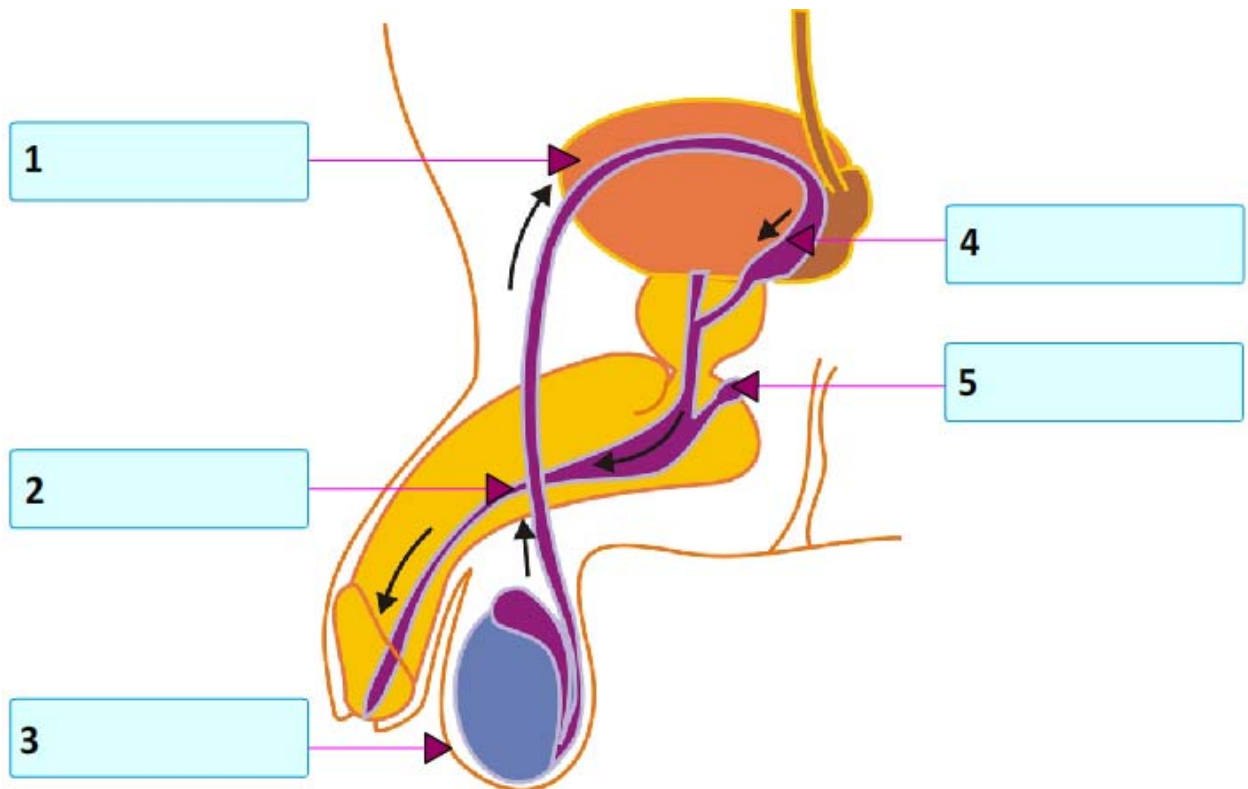


Learners' Planet

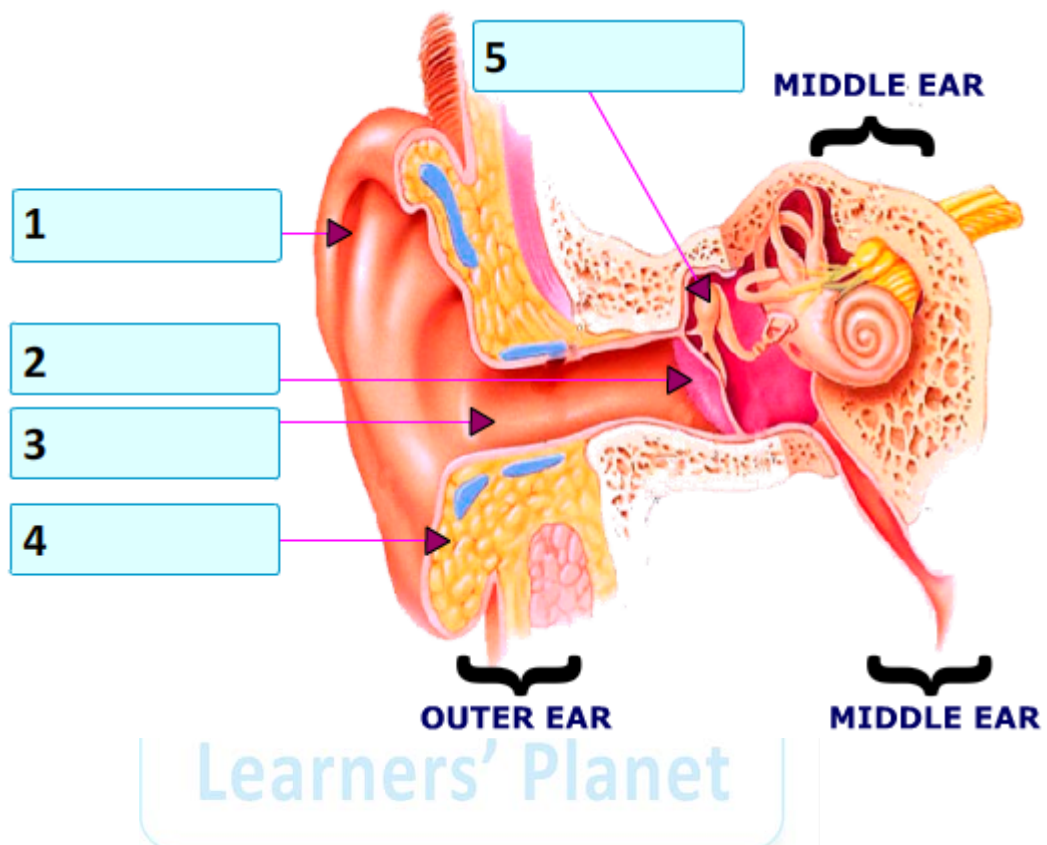
**D. Identify the different parts of human eye.**  
**[Pupil, Vitreous Humour, Iris, Optic Nerve, Blind Spot, Lens]**



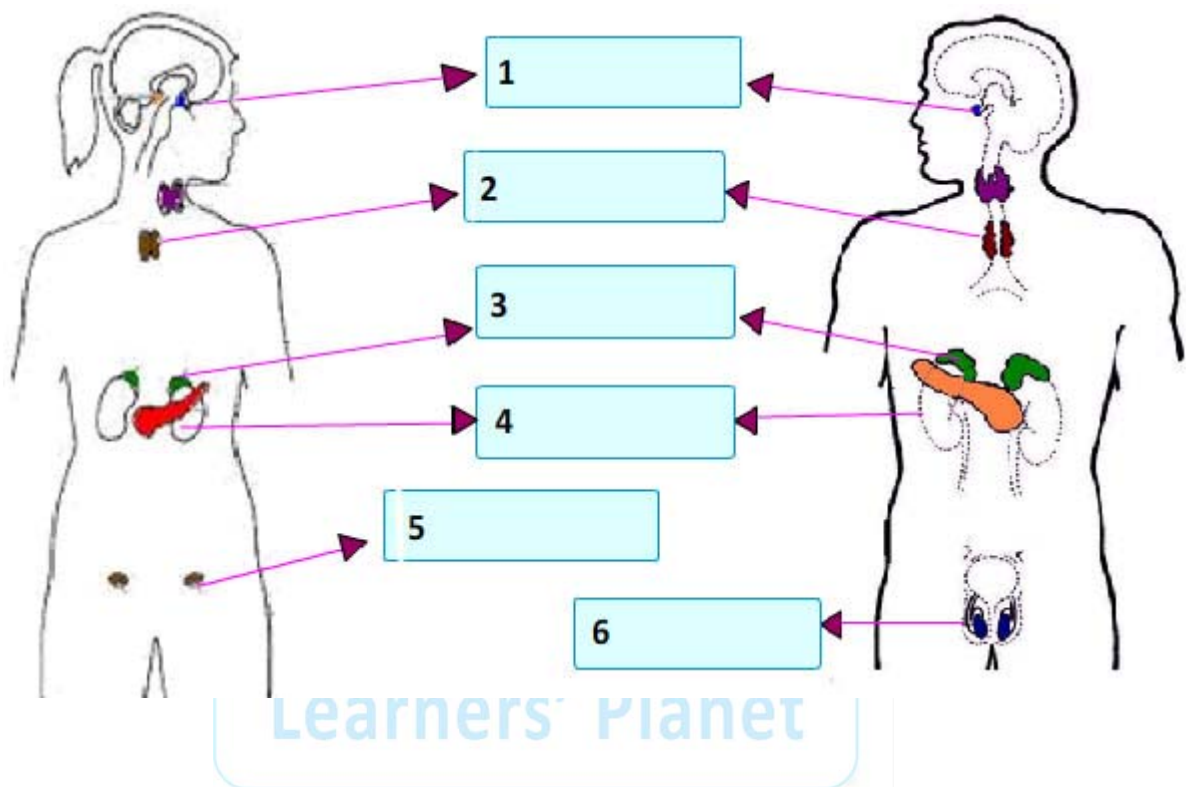
**E. Identify the different parts of male reproductive system.  
[Seminal Vesicles, Scrotum, Urethra, Cowper's Glands  
(Bulbo-Urethral Gland), Urinary Bladder]**



**F. Identify the different parts of human ear.**  
**[Ear Canal, Cartilage, Ear Drum, Pinna, Malleus]**



**G. Identify the different parts of endocrine system.  
[Kidneys, Pituitary Glands, Adrenal Gland, Thymus Gland,  
Ovaries (Female), Testis (Male)]**



## **Answers:**

### **A. Parts of a respiratory system.**

1. Nasal Cavity
2. Nose
3. Epiglottis
4. Pharynx
5. Larynx
6. Trachea

### **B. Parts of a digestive system.**

1. Superior Vena Cava
2. Right Pulmonary Veins
3. Right Atrium
4. Aorta
5. Pulmonary Artery
6. Left Pulmonary Veins
7. Left Atrium

### **C. Parts of a circulatory system.**

1. Superior Vena Cava
2. Right Pulmonary Veins
3. Right Atrium
4. Aorta
5. Pulmonary Artery
6. Left Pulmonary
7. Left Atrium



**D. Parts of human eye.**

1. Pupil
2. Lens
3. Iris
4. Vitreous Humour
5. Optic Nerve
6. Blind Spot

**E. Parts of male reproductive system.**

1. Urinary Bladder
2. Urethra
3. Scrotum
4. Seminal Vesicles
5. Cowper's Glands (Bulbo-Urethral Gland)

**F. Parts of human ear.**

1. Pinna
2. Ear Drum
3. Ear Canal
4. Cartilage
5. Malleus

**G. Parts of endocrine system.**

1. Pituitary Glands
2. Thymus Gland
3. Adrenal Gland
4. Kidneys
5. Ovaries (Female)
6. Testis (Male)